

The 30 ml dosing pump is delivered in plastic bags with the 3 standard caps : DIN38, DIN40 et DIN42.  
To assemble the cap, you only have to unscrew the head of the pump, to unscrew the octagonal ring, to place the pump between both parts of the pump and to screw the pump once again.

## General Information

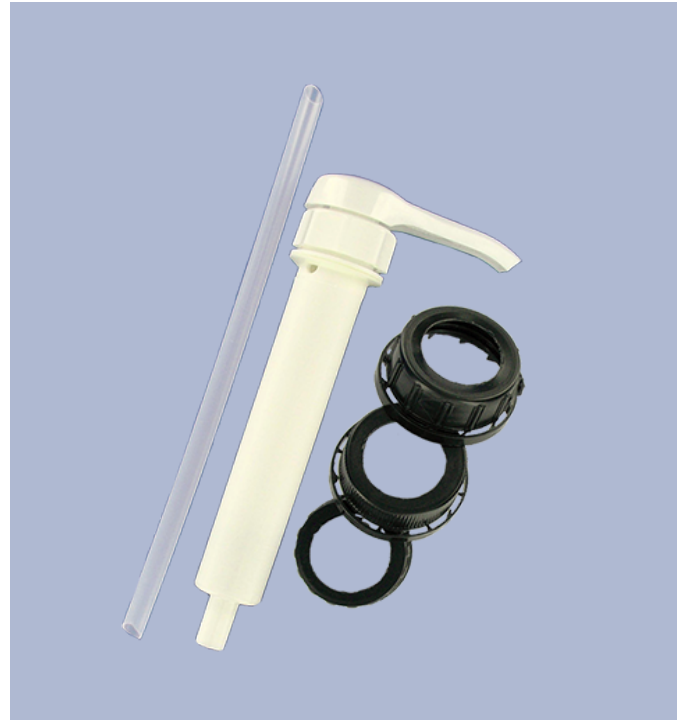
- Ordering numbers : DIS3002PP00060BLA 02
- Weight : 78.00 gr
- Color : white
- Maximum depth of the bottle : 355 mm

Neck : NU

## Standard packaging :

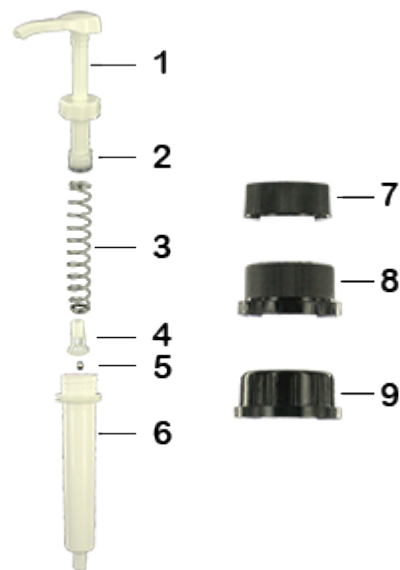
- 100 pcs per box
- Dimensions : 60 x 40 x 31 cm
- Gross weight : 8.58 Kg

## Photo



## Material

Pos	description	Material
1	push-button	ABS
2	Piston	PE
3	Main spring	St. steel 302
4	valve	PP
5	ball	St. steel 304
6	Cylinder	ABS
7	Cap DIN 38	HDPE
8	Cap DIN 40	HDPE
9	Cap DIN 42	HDPE
10	Tube	PE



Media

