

The 20 ml dosing pump is delivered in plastic bags with the 3 standard caps : DIN38, DIN40 et DIN42.
 To assemble the cap, you only have to unscrew the head of the pump, to unscrew the octagonal ring, to place the pump between both parts of the pump and to screw the pump once again.

General Information

- Ordering numbers : DIS2002PP00060BLA 02
- Weight : 78.00 gr
- Color : white
- Maximum depth of the bottle : 355 mm

Neck : NU

Photo

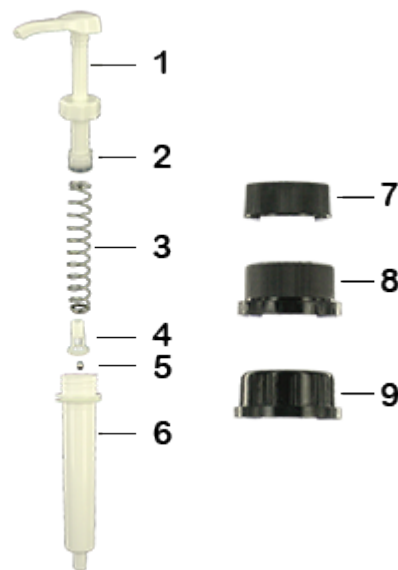


Standard packaging :

- 100 pcs per box
- Dimensions : 60 x 40 x 31 cm
- Gross weight : 8.58 Kg

Material

| Pos | description | Material |
|-----|-------------|---------------|
| 1 | push-button | ABS |
| 2 | Piston | PE |
| 3 | Main spring | St. steel 302 |
| 4 | valve | PP |
| 5 | ball | St. steel 304 |
| 6 | Cylinder | ABS |
| 7 | Cap DIN 38 | HDPE |
| 8 | Cap DIN 40 | HDPE |
| 9 | Cap DIN 42 | HDPE |
| 10 | Tube | PE |



Media

