

General Information

- Ordering numbers : 01500VIPE00400NAT
- Weight : 415.00 gr
- Color : natural
- Dimensions : diameter 130 mm / height 290 mm
- useful volume : 1500 ml
- Flow at 2.5 bar : 760 ml/min
- maximum pressure : 3 bar
- Spray angle : 0-60 °
- Pressure 50 maneuvers empty : 1,4 bar
- Pressure 100 maneuvers empty : 2,9 bar
- Pressure 50 operations (50% of volume) : 2,8 bar
- Pressure 15 operations (maximum volume) : 2,5 bar

Photo

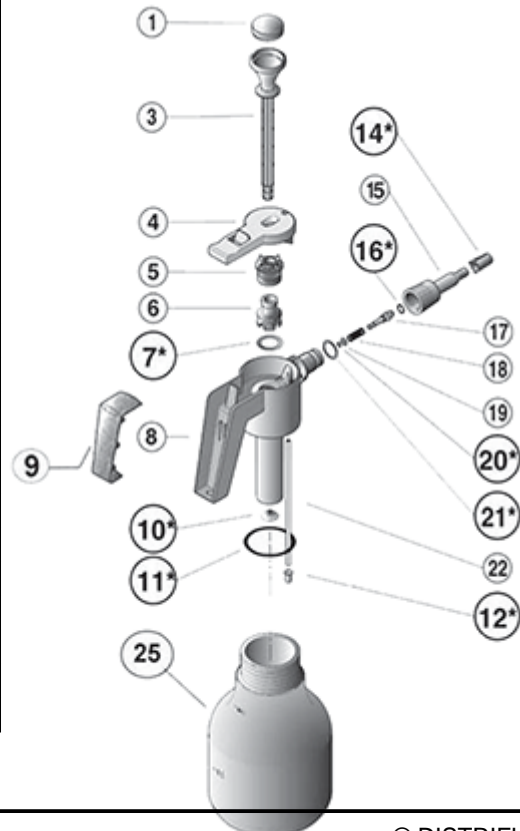


Standard packaging : C04EP

- 12 pcs per box
- Dimensions : 29 x 39 x 50 cm
- Gross weight : 5.98 Kg

Material

Pos	description	Material
1	cover	PP
3	Pump stem	PP
4	handle	PP
5	nut	PP
6	Disc	PP
7	O-ring 22 x 3	FPM
8	handle	PP
9	handle	PP
10	Nonreturn valve	FPM
11	O-ring 49.21 x 3.53	FPM
12	filter	PP
14	nozzle	PP
15	nozzle	PP
16	O-ring 6.75 x 3.53	FPM
17	Valve axis	PA6 FG
18	spring	Aisi 302
19	Disc	PA6 FG
20	O-ring 1.78 x 4.47	FPM
21	O-ring 16 x 3	FPM
22	diptube	LDPE
23	Tank	HDPE



Media

